

Material:

Housing: 30% Glass filled PBT UL94V-0.

Contacts: Phosphor Bronze.

Plating: Selective gold plated: gold plated on mating area and nickel plated on wire cutting area.
Gold plated over nickel.

Cable: 1.27mm (0.050") pitch flat cable.

Electrical Characteristics:

Current Rating: 1 AMP.

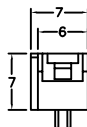
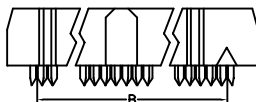
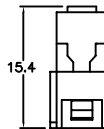
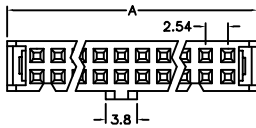
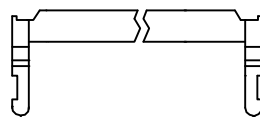
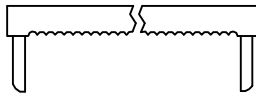
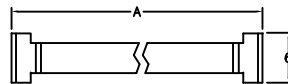
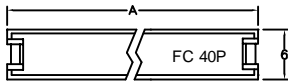
Insulator Resistance: 5000MΩmin. at DC 500V.

Contact Resistance: 20mΩmax. at DC 100mA.

Operating Temperature: -55°C~+105°C.

Features:

- * Optional polarizing key, polarizing bump.
- * Optional strain relief.
- * Choices of gold plated or selective gold plated.



Position	Dimension	
	A	B
10	17.27	10.16
14	22.35	15.24
16	24.89	17.78
20	29.97	22.86
24	35.05	27.94
26	37.59	30.48
30	42.67	35.56
34	47.75	40.64
40	55.37	48.26
50	68.07	60.96
60	80.77	73.66
64	85.85	78.74

Ordering information

IDC01- 10 3 B 1
 Series No. of Pin Count 3: Selective Gold Plated 1: Gold Plated
 B: Black Y: Grey 1: With Strain Relief 2: Without Strain Relief

- * Polarizing key (IDC01-Key) order separately.
- ** IDC01-10GB1NB suffix NB to identify without polarizing bump.
Contact factory for additional pin count.